

BOOMS, CARTS, COOLERS WELD TABLE AND SMOKE COLLECTORS



BERNARD MODEL 2710 CART



Wheels: 8" (20.5cm) Diameter
Capacity: 2000 lbs. (4400 kg)
Cart Size: 57" x 30" x 8-3/4"
(146cm x 76.8cm x 22.4cm)
Shipping Weight: 233 lbs. (105.9 kg)

Base is 41 gallon (155.16 liters) water reservoir to be used as ballast. Can also be used with Model 2040 Coolant Pump for cooling purposes.
OutRiggers Included

BERNARD MODEL 760 CART

Base is 41 gallon (155.16 liters) water reservoir to be used as ballast. Can also be used with Model 2040 Coolant Pump for cooling purposes.

BERNARD MODEL 2300 BOOM



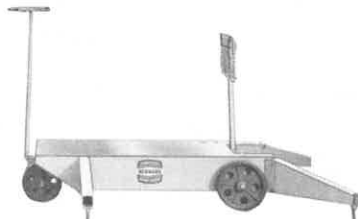
Horizontal Reach: 5 to 8 ft. (1.5 to 2.5 meters)
Elevation: 3 to 14 ft. (.9 to 4 meters)
Capacity: 200 lbs. (90.9 kg)
Rotation: 360°
Mounting: Fits 2710, 2910 Carts, Model 2380 Floor Mount and 2390 Wall Mount.
Shipping Weight: 110 lbs. (50 kg)

BERNARD MODEL 2675 BOOM



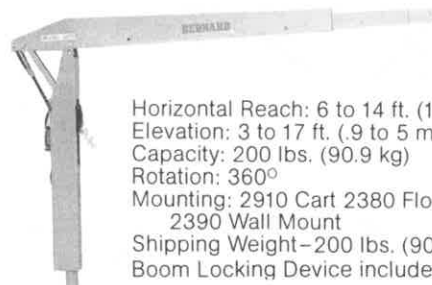
Horizontal Reach: 5 to 8 feet (1.5 to 2.5 meters)
Elevation: 3 to 14 feet (.9 to 4 meters)
Capacity: 200 lbs. (90.9 kg)
Mounting: Fits 2710, 2910 Carts, 2380 Floor Mount and 2390 Wall Mount
Shipping Weight: 110 lbs. (50 kg)

BERNARD MODEL 2910 CART



Wheels: Front-10" (25.6cm) Rear-12" (30.7cm)
Capacity: 3000 lbs. (1363 kg)
Cart Size: 57" x 30" x 8-3/4" (146cm x 76.8cm x 22.4cm)
Shipping Weight: 325 lbs. (147.7 kg)
41 Gallon Water Reservoir for Balast on 2910 Cart

BERNARD MODEL 2475 BOOM



Horizontal Reach: 6 to 14 ft. (1.8 to 4.3 meters)
Elevation: 3 to 17 ft. (.9 to 5 meters)
Capacity: 200 lbs. (90.9 kg)
Rotation: 360°
Mounting: 2910 Cart 2380 Floor Mount and 2390 Wall Mount
Shipping Weight-200 lbs. (90.9 kg)
Boom Locking Device included

BERNARD MODEL 744 CART (115V pump) 744A CART (230V pump)

Shipping Weight: 270 lbs.
(121.5 kg)
Capacity: 2000 lbs. (4400 kg)
Cart Size: 57" x 30" x 11"
(146 cm x 76.8 cm x 28 cm)
Tank Capacity: 41 gallons
(155.16 liters)
Wheels: 8" (20.5 cm)



BERNARD FLOOR & WALL MOUNTS

2380 FLOOR MOUNT

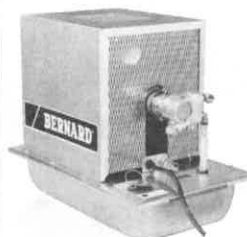


2390 WALL MOUNT



Model 2380 Floor Mount bolts to the platform of a truck or shop floor. The Model 2390 Wall Mount bolts to a vertical steel column or a masonry wall. Above units will mount the following booms: 2300, 2375 & 2475.

BERNARD MODEL 3500SS WATERCOOLER



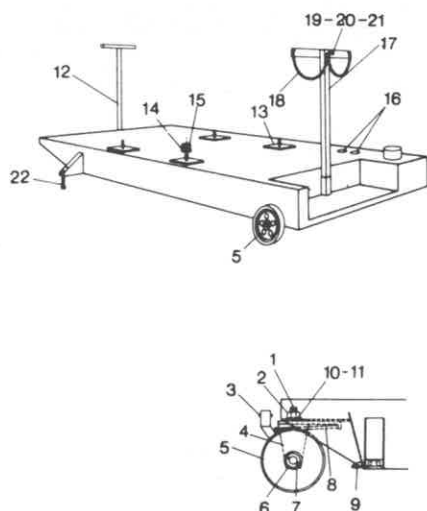
Dimensions: 21-1/4" long x 13-1/8" x 16-3/4" high (54.0 cm x 33.3 cm x 42.5 cm)
Net Weight: 43 lbs. (19.5 kg)
Shipping Weight: 46 lbs. (21.0 kg)
Pump Capacity: 100 p.s.i. max. 1.5 gpm @ 50 p.s.i./1.8 gpm @ 60 p.s.i.
Heat Exchanger: High efficiency, Rust-proof
Reservoir: 3 gal. capacity-stainless steel
Motor Voltage: 115V or 230V, single phase, 50 or 60 HZ A.C. (please specify)
Amperage: 5.4/2.7 (60HZ)
Water Connections: Will fit all commercial gun and torch cables. (1/4" NPT)

BERNARD COOLANT PUMP



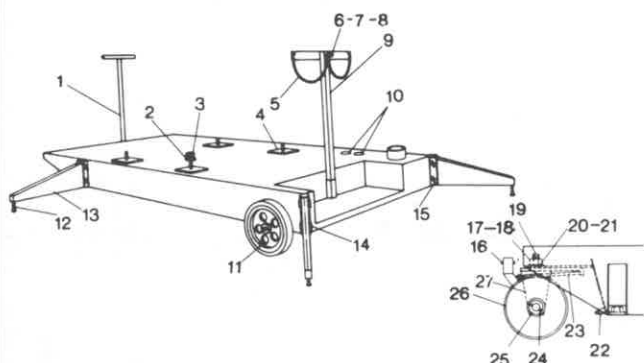
Used in combination with 2710 or 2910 Cart for equipment cooling. Light weight and rugged with a quiet quick change industrial pump. Continuous duty at full rated capacity of 1.5 gallons (5.68 liters) per minute. Visible flow indicator. Standard fittings permit easy adaption for a variety of applications.

BERNARD MODEL 2710, 760, 744 CARTS



Item	Description	Part No.	Item	Description	Part No.
1	Bolt (Front Wheel)	R921	13	Mounting Pad	
2	Nut (Front Wheel)	R947		W/Stud	1087
3	Handle Pin	R1045	14	Washer	R1056
4	Front Wheel Bracket	714	15	Nut for Mounting Pad	R1055
5	Wheels (Front & Back)	R710	16	Cap Plug	R2036
6	Washer	R1034	17	Cylinder Support	
7	Cotter Pin	R932		Assembly	708
8	Spring	R723	18	Chain	R1041
9	Drain Plug	R719	19	Nut (For Chain)	R1456
10	Nylon Washer	R1046	20	Washer (For Chain)	R1452
11	Swivel Busing	721	21	Bolt (For Chain)	R1103
12	Handle Assembly	709	22	Gusset Screw	R2704

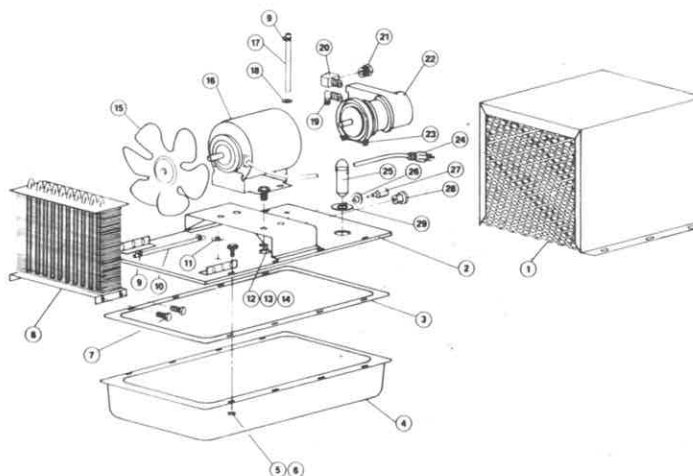
BERNARD MODEL 2910 CART



Item	Description	Part No.	Item	Description	Part No.
1	Handle Assembly	709	13	Gusset Assembly	951
2	Washer	R1056	14	Clevis Pin	R2420
3	Nut for Mounting		15	Cotter Pin	R1040
	Pad	R1055	16	Handle Pin	R1045
4	Mounting Pad		17	Nut (Front Wheel)	R947
	W/Stud	1087	18	Washer	R1034
5	Chain	R1041	19	Bolt (Front Wheel)	R921
6	Nut (For Chain)	R1456	20	Nylon Washer	R1046
7	Washer (For Chain)	R1452	21	Swivel Bushing	916
8	Bolt (For Chain)	R1103	22	Drain Plug	R719
9	Cylinder Support		23	Spring	R723
	Assembly	708	24	Cotter Pin	R932
10	Cap Plug	R2036	25	Washer	R922
11	Rear Wheel	R924	26	Front Wheel	R923
12	Gusset Screw	R2902	27	Front Wheel Bracket	941

3500SS STAINLESS STEEL WATERCOOLER

ITEM NO.	QUANTITY	PART NO.	DESCRIPTION
1	1	3583	Cover, Cooler
2	1	3582	Top Weldment
3	1	R3574	Gasket Material, 5.5 ft.
4	1	3575	Tank
5	8	R3596	Screw, 10-32x1/2
6	8	R1374	Nut, 10-32
7	3	R1102	Screw, 1/4-20x1/2
8	1	R3880	Radiator
9	3	R272	Clamp, Worm Gear
10	1	3098A	Hose
11	1	R3888	Grommet, 3/8 I.D.
12	4	R1451	Screw, 1/4-20x1/2
13	4	R1456	Nut, 1/4-20
14	8	R1452	Washer, flat 1/4
15	1	R3525	Fan Blade with Set Screw
16	1	R5514	Motor, 115/230 V, 60 HZ, 1 Ph.
		R3429	Motor, 230 V, 50 HZ, 1 Ph.
17	1	3098B	Hose
18	1	R3558	Grommet, 5/8 I.D.
19	1	R5523	Elbow 90°
20	1	R3077	Elbow, 3/8 N.P.T.
21	1	R3063	Reducer, 3/8 N.P.T.-1/4 N.P.T.
22	1	R5515	Pump
23	1	R1066	Clamp, Motor to Pump
24	1	R1096	Power Cord
25	1	3683	Level Indicator Assembly
26	1	R3504	Retainer
27	1	R3408	Adaptor, Hose to Pipe
28	1	R1429	Strain Relief Bushing
29	1	R3889	Grommet, 1 1/4 I.D.
NOT SHOWN		R5557	Replacement Filter Screen



Dimensions: 21 1/4" long x 13 1/8" x 16 3/4" high
(54.0 cm. x 33.3 cm. x 42.5 cm.)

Net Weight: 43 lbs. (19.5 kg.)

Shipping Weight: 46 lbs. (21.0 kg.)

Pump Capacity: 100 p.s.i. max. 1.5 gpm @

50 psi/1.8 gpm @ 60 psi

Heat Exchanger: High efficiency, Rustproof

Reservoir: 3-gal. capacity—stainless steel

Motor Voltage: 115V or 230V, single phase,

50 or 60 HZ A.C. (please specify)

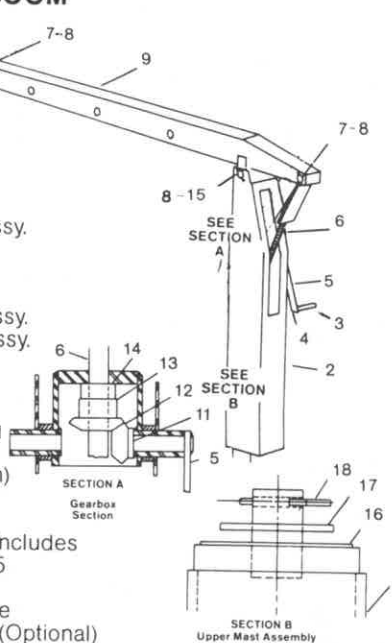
Amperage: 5.4/2.7 (60HZ)

Water Connections: Will fit any commercial gun and torch cables

MODEL	GAL.	LITER	VOLTS	AMPS	HZ	PHASE
3500 SS	3	11.36	115	5.4	60	Single
3501 SS	3	11.36	230	2.7	60	Single
3502 SS	3	11.36	230	2.7	50	Single

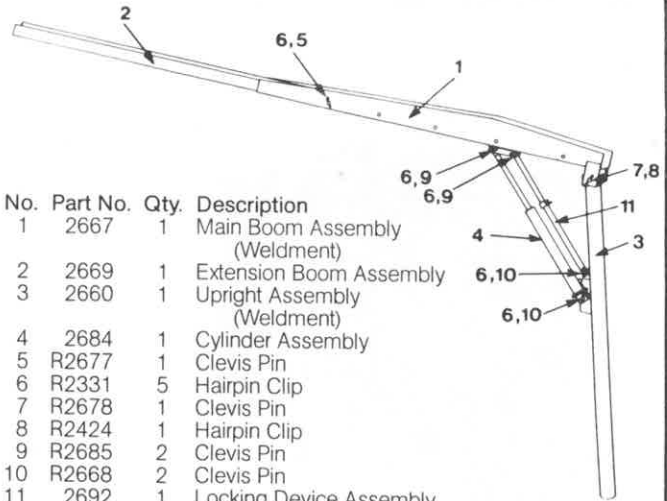
BERNARD MODEL 2300 BOOM

Item	Part No.	Description
1	2319	Mast
2	2349	Upright Assy.
3	2342	Handle
4	R2332	Handle Bolt
5	2346	Handle Bar Assy.
6	2326	Lift Rod
7	R2344	Adjusting Pin
8	R2331	Hair Pin Clip
9	2337	Main Boom Assy.
10	2301	Front Boom Assy.
11	R2334	Pin
12	2328	Pinion
13	2327	Gear
14	R2329	Thrust Bearing
15	2320	Pivot Pin
16	R1046	Washer (Nylon)
17	R1034	Washer
18	R1040	Cotter Pin
	2323	Handle Assy. Includes #3, #4, #5
	R2335	Rod Stop
	2692K	Locking Device Assembly (Optional)



BERNARD MODEL 2675 BOOM

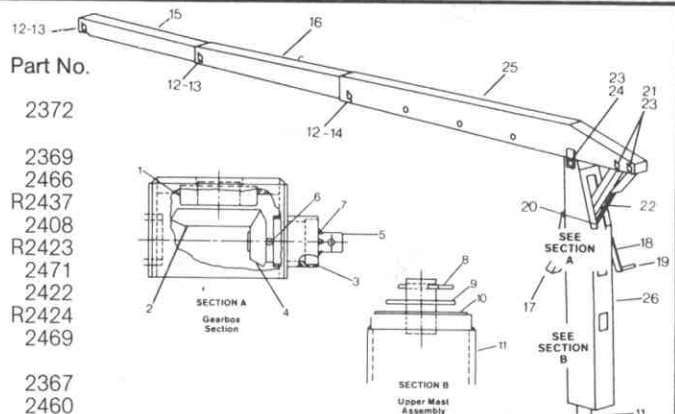
No.	Part No.	Qty.	Description
1	2667	1	Main Boom Assembly (Weldment)
2	2669	1	Extension Boom Assembly (Weldment)
3	2660	1	Cylinder Assembly
4	2684	1	Clevis Pin
5	R2677	1	Hairpin Clip
6	R2331	5	Clevis Pin
7	R2678	1	Hairpin Clip
8	R2424	1	Clevis Pin
9	R2685	2	Clevis Pin
10	R2668	2	Clevis Pin
11	2692	1	Locking Device Assembly



BERNARD MODEL 2475 BOOM

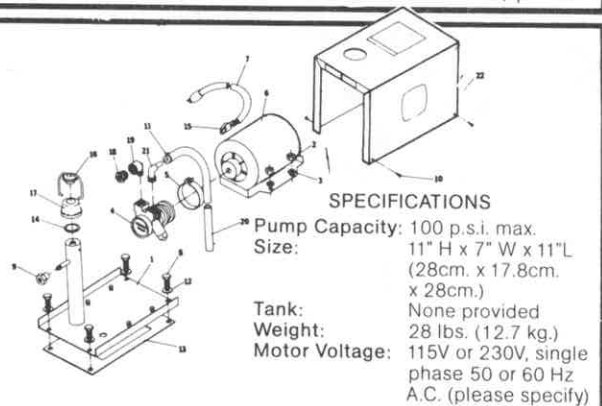
Item	Description	Part No.
1	Thrust Bearing	R2436
2	Gear	2431
3	Bearing	R2435
4	Pinion	2432
5	Pinion Arm	2427
6	Roll Pin	R2334
7	Retaining Ring	R2462
8	Cotter Pin	R1040
9	Washer	R922
10	Washer-(Nylon)	R1046
11	Mast	2290
12	Hairpin Clip	R2331
13	Clevis Pin	R2420
14	Adjusting Pin	R2419

Item	Description	Part No.
15	Boom Section-Tip End	2372
16	Boom Section-Center Piece	2369
17	Boom Locking Device	2466
18	Pin (Handle)	R2437
19	Handle Assembly	2408
20	Rod Stop	R2423
21	Pin	2471
22	Lifting Rod	2422
23	Hairpin Clip	R2424
24	Pin-Boom Pivot	2469
25	Boom Section-Rear Piece	2367
26	Upright Assembly	2460



BERNARD MODEL 2040 AND 2010 COOLANT PUMPS

No.	Part No.	Description	Qty. Req.
1	1060	Base Assy-Coolant Pump	1
2	R1043	Hex Nut	4
3	R1044	Washer 5/16	4
4	R5515	Pump	1
5	R1066	Clamp, Pump	1
6	R1089	Motor-Model 2040-115V. 60 Hz	1
6	R1099	Motor-Model 2041-230 V.-60 HZ.	1
6	R2099	Motor-Model 2043-230 V.-50 HZ.	1
7	R1096	Power Cord	1
8	R1102	Bolt 1/4-20 x 1/2	4
9	R1413	Fitting, Water Return	1
10	R1424	Screw, Washer Head	4
11	R1425	Hose Clamp	1
12	R1452	1/4 Washer	4
13	R1453	Gasket	1
14	R1490	Gasket 1-5/16 OD	1
15	R2507	Cord/Strain Relief	1
16	R3043	Clamp, Glass Bowl	1
17	R3044	Glass Bowl	1
18	R3063	Fitting, Water To Pump	1
19	R3077	Fitting Pump Outlet	1
20	R3099	Hose, Cooler 3/8 ID	3
21	R5524	Fitting, Water Inlet	1
22	1064	Cover-Coolant Pump	1
*	R5557	Filter Screen	1



MODEL	(Reservoir) GAL.	LITER	VOLTS	AMPS	HZ.	PHASE	PRODUCT CONSISTS OF:			MTL.	L x W x H DIMENSIONS	NET WEIGHT
							PIECE #1	PIECE #2	PIECE #3			
2040	-	-	115	5.6	60	Single	-	-	-	Not Applicable	11" x 7" x 11" (28cm x 17.8cm x 28cm)	28 Lb (12.7 Kg.)
2041	-	-	230	2.3	60	Single	-	-	-	-	-	-
2043	-	-	230	2.6	50	Single	-	-	-	-	-	-
2008	13	49	230	2.6	50	Single	2013-13 Gal. Tank	2043-Pump-230V-50Hz	-	Rust Proof Polyethylene Tank	21-1/4" x 17-1/4" x 23-7/16" (52cm x 43.8cm x 59.5cm)	38 Lb (17.3 Kg.)
2009	13	49	230	2.3	60	Single	2013-13 Gal. Tank	2041-Pump-230V	-	-	-	-
2010	13	49	115	5.6	60	Single	2013-13 Gal. Tank	2040-Pump-115V	-	-	-	-



RECTANGULAR TANK UNITS

Rectangular tank units are exceptionally well suited for MIG and TIG mobile cart type installations and permanent installations. Offered in one size 13 gallon, this Rectangular tank unit is exceptionally well suited for MIG & TIG Mobile cart type Installation & Permanent Installations.



BERNARD MODEL 2040 COOLANT PUMP

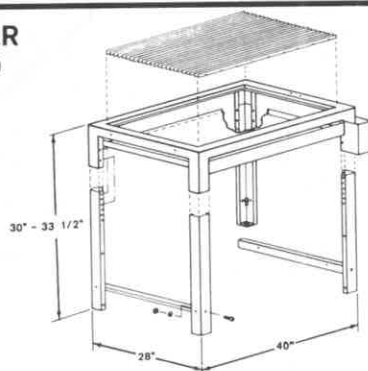
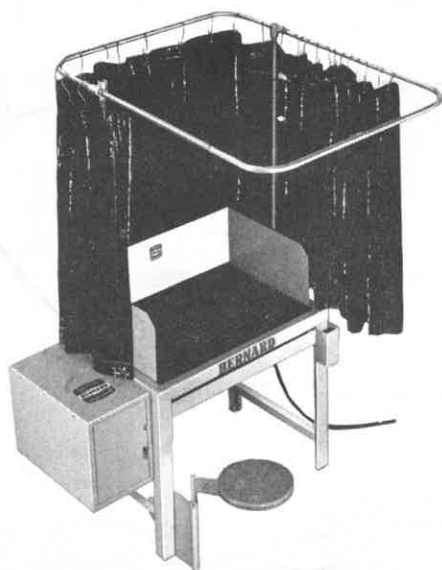
When combined with our tanks or carts, becomes a complete self-contained cooler/circulator unit. With a quiet, carbon VANE positive displacement pump it is suitable for continuous duty at full rated capacity.



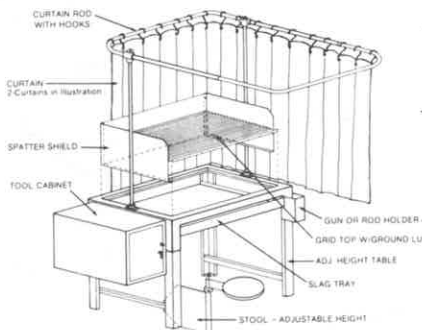
BERNARD MODEL 2500 MOTORIZING KIT

For use with Model 2475 Boom. Motor: 115V., 60 cycle, 1/2 hp. Specially geared. Switch Control-Up, down, off, on. 20 foot remote control cable. Shipping Weight: 41 lbs. (18.6 kg.)

BERNARD METAL FABRICATING CENTER **ADJUSTABLE TABLE WITH GRATE-PART NO. 3600**



Includes: Grate w/ Ground Lug, Floor Levelers, Slag Tray and Rod Holder. Shipping weight: 129 lbs.



FEATURES

TABLE FRAME IS 12 gauge steel welded construction.

STEEL GRATE on table top measures 24\"/>

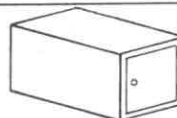
FLOOR LEVELERS allow table to sit level on uneven floors, or to be bolted down.

SLAG TRAY beneath grate is easy to clean.

TABLE is easy to assemble and height is adjustable.

ORDER ACCESSORIES SEPARATELY

#3601 WELD SPATTER SHIELD
 18 gauge steel - 12\"/>



#3603 TOOL CABINET
 18 gauge steel all welded construction - completely assembled, 24\"/>



#3604 STOOL
 Adjustable height with swinging wood seat. Shipping Weight: 22 lbs.



#3605 CURTAIN ROD & HOOKS
 3/4\"/>



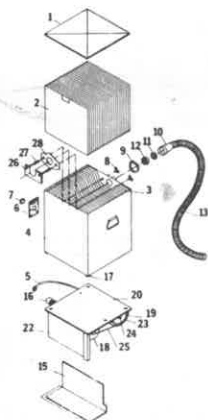
#3606 CURTAIN (each)
 12-Mil dark green screen 44 x 104 with reinforced grommets. Two required to completely surround work area and weldor. Shipping Weight: 5 lbs. (each)

MODEL 6300 SERIES CLEAN-AIR WELD SYSTEM™

SPECIFICATIONS

Size: 16-1/4\"/>

Shipping Dimensions: 20\"/>



PARTS LIST			
Item	Part No.	Description	
1	6247	Cover Assembly	18 6393 Pump-50 Hz
2	6255	Filter Element (Pkg. of 6)	19 R6292 Motor-1 Phase
3	6222	Baffle Assembly	(Less Cord)
4	6244	Cannister	Specify voltage and
5	R1096	Power Cord w/Plug (115V, 60 Hz only)	19 R6253 hertz
6	6366	Access Screen	Motor-3 Phase
7	R6321	Snap Bushing	(Less Cord)
8	R6381	Wing Nut	Specify voltage and
9	R6226	Hose Clamp (Large)	hertz
10	R6214	Intake Hose	20 6334 Base Plate
11	6213	Sparktrap Screen	21 R6319 Grooved Pin (2 per 6334
12	6208	Sparktrap Screen	Base Plate) Not Shown
		w/Spacer Ring	22 6359 Pump Pivot Assembly
13	7255	Hose-10 Ft.	23 R6308 Pulley
14	R6232	Hose Clamp (Small)	24 R6230 Pulley Screw
		Not Shown (3 per unit)	25 R6223 Drive Belt
15	6343	Pump Guard	26 6378 Filter Washer Bracket
16	R6228	Connector Hose (6" Long)	Assembly
17	R6317	Rubber Feet (3 per unit)	27 R6382 Compression Spring
18	6303	Pump-60 Hz	28 R6380 Gasket-Sparktrap

MODEL SELECTION CHART

Clean-Air Weld System Models	6300	6300A	6300B	6300C	6300D	6300E	6300F	6300G	6300H
Volts	115	230	115	230	220	380	220	440	415
Cycle/Hertz	60	60	50	50	50	50	60	60	50
Phase	1	1	1	1	3	3	3	3	3

For 6300 series use Part No. 6255 Filter Elements-Units are Quantity Priced and sold in standard cartons of 6 each.

When using Bernard Booms with Smoke Extracting Equipment, use Bernard Part No. 6155-25\"/>

BERNARD TELA-BOOM AND CART WARNINGS

Tela-Booms

1. Boom must not be loaded beyond 200 Lbs. (91 Kg.)
2. Do not lower boom end to less than 4 ft. (1.22 meters) from floor.
3. When boom is mounted on cart, outrigger screws must be firmly tightened against floor, and adequate ballast must be provided.
4. When boom is mounted on cart, all weight must be removed from the boom before the cart can be moved. (I.E. Remove feeder from boom before moving cart.)
5. Periodically check and replace worn gears, lifting screw and clevis pin.
6. Keep gears and lifting screw well greased.
7. Add proper ballast before extending boom.
8. Check boom daily for safe operation-carefully test the installation by swinging the boom through its full rotation before placing unit into service.

Cart (2710)

- (1) Use only 2300 & 2675 series booms with this cart.
- (2) When boom is mounted on cart, outrigger screws must be firmly tightened against floor, and adequate ballast must be provided.
- (3) Fill cart with water prior to mounting of the welding pads.

Cart (2910)

- (1) When boom is mounted on cart, outrigger screws must be firmly tightened against floor and adequate ballast must be provided.
- (2) Fill cart with water prior to mounting of the welding pads.

Motorized Kit (2500)

- (1) When using Model 2500 motorizing kit with 2475 boom, operator must release locking device so boom is free to lower without restriction.



Box 667, Beecher, Illinois 60401
 Phone: (312) 946-2281

DOVER CORPORATION / BERNARD DIVISION